

Connect with  
**Social  
Values**

*A book of Social Studies*

by  
**F.A. Khan**  
M.A. M.Ed.



**4**

**Evershine  Publishers**

Soni House, WZ-348, Nangal Raya, New Delhi - 110046  
Phones : 28111758, 28113958, Fax : 28112353



*Published by*

**EVERSHINE PUBLISHERS**

Soni House, WZ-348, Nangal Raya, New Delhi - 110046

Phones : 28111758, 28113958, Fax : 28112353

© All rights reserved with the Publishers.

The contents, transparencies, illustrations and layout of this book are the sole property of **Evershine Publishers**. New Delhi and are copyright. Any reproduction in whole or in part in any form what-so-ever is strictly prohibited.

# Preface

---

---

---

---

---

**Connect with Social Value – A Book of Social Studies** is a carefully graded series for classes 1 to 5. It conforms to the **Continuous and Comprehensive Evaluation (CCE)** scheme introduced by the Central Board of Secondary Education. The series is also useful to other educational boards.

As we know that today's child is tomorrow's citizen, So he/she must be made to realize what he/she receives from the society and what he/she is expected to contribute to the society. This is the main aim of understanding the subject of social studies. The main features of the series are :

- ★ **Easy and lucid** language in a child-friendly manner.
- ★ Relevant and colourful **illustrations, photographs and maps** to make learning process easy.
- ★ **Word Meanings** to enhance vocabulary.
- ★ **To Recall** at the end of each chapter for recap.
- ★ **Summative Assessments** to assess and evaluate the children on regular basis. Include exercises such as **MCQs, True-False, Matching** and **Long Answer Questions**.
- ★ **Formative Assessments** include **Activities** and **Projects**.
- ★ **Life Skills** and **Speaking Skills** to help learners to move towards a holistic development.
- ★ **H.O.T.S.** to test the learner's thinking skills.
- ★ **Map Practice** included to hone the mappings skills.
- ★ Test papers in the form of **Formative Assessment** (four F.A.) and **Summative Assessments** (two S.A.).

The series has been developed with great care, for effective teaching and learning in the classroom and beyond.

– Authors

# CONTENTS

## Unit - 1 : Our Country

1.	The Face of our Motherland	05
2.	The Northern Mountains	11
3.	The Northern Plains	20
4.	The Great Indian Desert	29
5.	The Southern Plateau	35
	<b>Formative Assessment - 1</b>	<b>43</b>
6.	The Coastal Plains and Islands	44
7.	The Climate of India	55

## Unit - 2 : Our Resources

8.	Soils of India	60
9.	Forests and Wildlife	65
10.	Water Resources of India	71
	<b>Formative Assessment - 2</b>	<b>76</b>
	<b>Summative Assessment - 1</b>	<b>77</b>
11.	Minerals Resources of India	79
12.	Agriculture and Industries	84
13.	Livestock and Human Resources	91

## Unit - 3 : Transport and Communication

14.	Means of Transport	96
15.	Means of Communication	103
	<b>Formative Assessment - 3</b>	<b>108</b>

## Unit - 4 : Art and Culture

16.	Our Heritage	109
17.	People Who Enriched Our Culture	115

## Unit - 5 : We Govern Ourselves

18.	Our Rights and Duties	121
19.	Our National Symbols	125
20.	Our Environment	129
	<b>Formative Assessment - 4</b>	<b>134</b>
	<b>Summative Assessment - 2</b>	<b>135</b>



## Unit - 1 : Our Country

# The Face of Our Motherland

India is the **seventh** largest country in the world in area and the **second** largest in population, after China.

India is also known as **Bharat** or **Hindustan**.

It is located in the southern part of the continent of Asia.

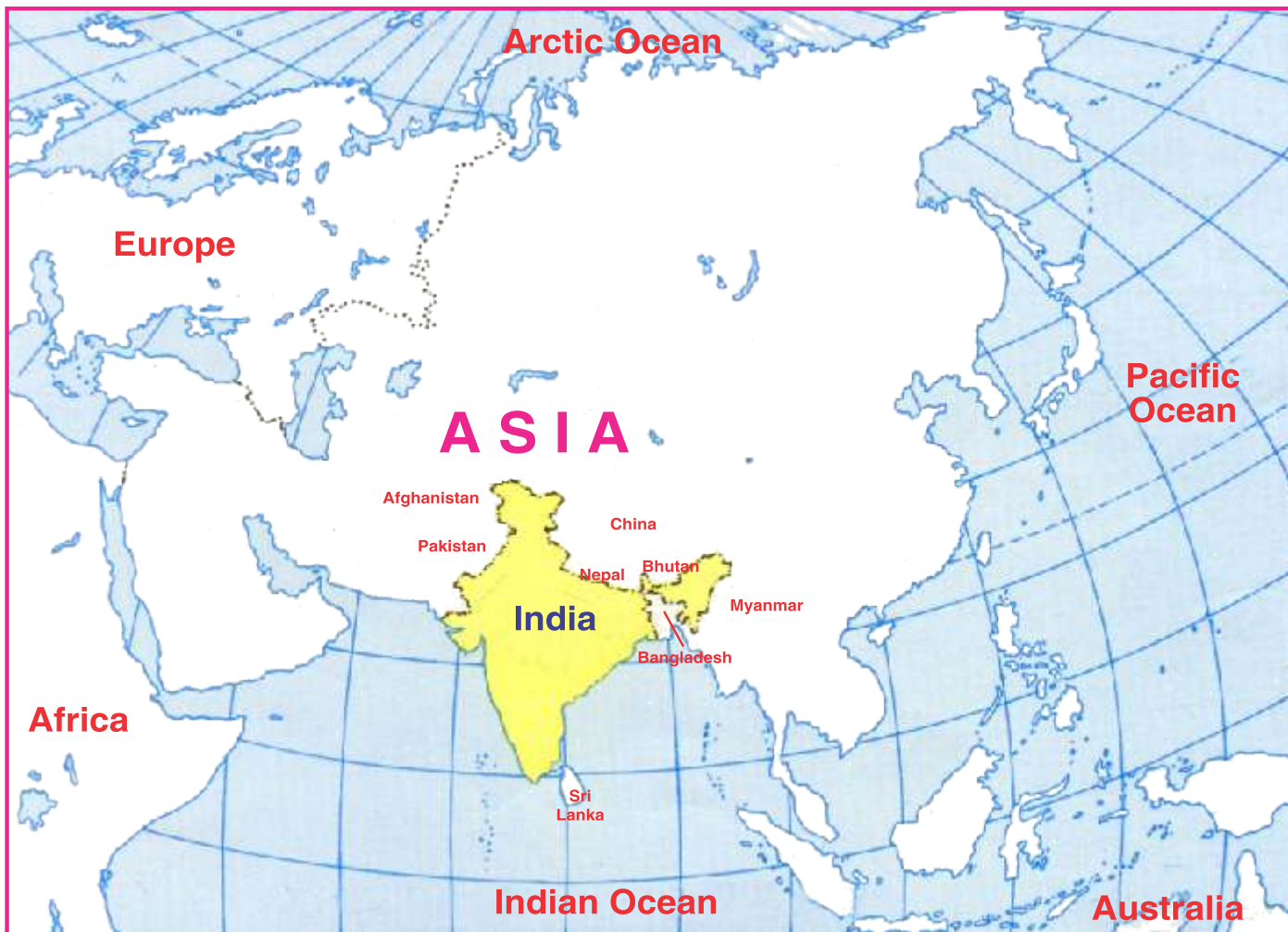
India has a land frontier of **15,200 kilometres** and a coastline of **7,516.6 kilometres**, including the mainland coastline as well as of the islands.

If you look at the map of India, you will find that its northern part looks like a **crown** and the southern part is shaped like a **cone**.

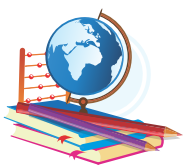
### Looking Ahead

In this lesson :

- ★ The Neighbouring countries of India
- ★ Physical features of India.



India and its neighbouring countries



India extends from north to south about 3,200 kilometres and from east to west about 3,000 kilometres.

India holds about **16 percent** of the world's population, though it has only **2.42 percent** of the earth's surface.

### INDIA AND ITS NEIGHBOURS

India is surrounded by many big and small countries. The neighbouring countries of India are:

1. Pakistan
2. Afghanistan
3. China
4. Bhutan
5. Nepal
6. Bangladesh
7. Myanmar
8. Sri Lanka

### POLITICAL DIVISION OF INDIA

Since India is a big country, it has been divided into smaller parts called the **States** and the **Union Territories**. There are 29 States and 7 Union Territories in India. Each State has its own government, which is chosen by the people of that State. The Union Territories are directly governed by the Central Government.



India- States and Union Territories.



The states and their capital are listed in the table.

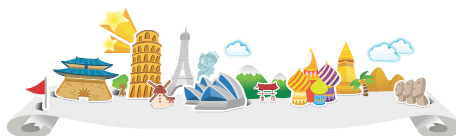
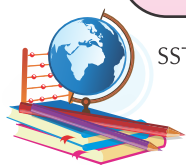
State	Capital	State	Capital
1. Andhra Pradesh	Hyderabad	2. Arunachal Pradesh	Itanagar
3. Assam	Dispur	4. Bihar	Patna
5. Chhattisgrah	Raipur	6. Goa	Panaji
7. Gujarat	Gandhinagar	8. Haryana	Chandigarh
9. Himachal Pradesh	Shimla	10. Jammu & Kashmir	Srinagar
11. Jharkhand	Ranchi	12. Karnataka	Bengaluru
13. Kerala	Thiruvananthapuram		
14. Madhya Pradesh	Bhopal	15. Maharashtra	Mumbai
16. Manipur	Imphal	17. Meghalaya	Shillong
18. Mizoram	Aizawl	19. Nagaland	Kohima
20. Odisha	Bhubaneshwar	21. Punjab	Chandigarh
22. Rajasthan	Jaipur	23. Sikkim	Gangtok
24. Tamil Nadu	Chennai	25. Telangana	Hyderabad
26. Tripura	Agartala	27. Uttarakhand	Dehra Dun
28. Uttar Pradesh	Lucknow	29. West Bengal	Kolkata

The Union Territories and their capitals are listed below

Union Territories	Capitals
1. Delhi (National Capital Territory)	Delhi
2. Andaman and Nicobar Islands	Port Blair
3. Chandigarh	Chandigarh
4. Dadra and Nagar Haveli	Silvassa
5. Daman and Diu	Daman
6. Lakshadweep	Kavaratti
7. Puducherry	Puducherry

### Know More

- ★ India got its name Bharat from the great ruler of the past called **Bharat**.
- ★ **Rajasthan** is the largest State and **Goa** is the smallest State in terms of area.
- ★ **Uttar Pradesh** is the most populated State and **Sikkim** is the least populated State.
- ★ Delhi called the **National Capital Territory**.



## PHYSICAL DIVISIONS OF INDIA

India is a country of mountains, hills, plains, plateaus, deserts, forests, rivers, lakes and coasts.

The Great Himalayas are to the north of India. The Indian Ocean is towards its south. The Arabian Sea is towards its west and the Bay of Bengal on its east.

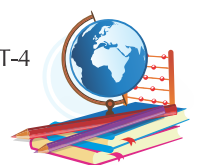
The main physical divisions of India are as follows :

1. The Northern Mountains
2. The Northern Plains
3. The Great Indian Desert
4. The Southern Plateau
5. The Coastal Plains and Islands

You will read about these physical divisions in detail in the next few lessons.



Map of India–Physical Divisions





## WORD MEANINGS

**continent** : a big land mass

**physical** : outer look



## LET US RECALL

- India is the **seventh largest** country in the world.
- India lies in the continent of **Asia**.
- India holds **16 percent** of the world's population.
- India has **29 States** and **7 Union Territories**.
- The main physical divisions of India are **the Northern Mountains, the Northern Plains, the Great Indian Desert, the Southern Plateau and the Coastal Plains and Islands**.

## TESTING TIME

### TASKS FOR FA & SA

(Based on CCE)

#### A. Tick (✓) the correct answer :

- The east west extend of India is about :
 

(a) 3,000 km	<input type="radio"/>	(b) 300 km	<input type="radio"/>
(c) 1,300 km	<input type="radio"/>	(d) 2,300 km	<input type="radio"/>
- Which is the most populated country in the world?
 

(a) Russia	<input type="radio"/>	(b) China	<input type="radio"/>
(c) Canada	<input type="radio"/>	(d) Egypt	<input type="radio"/>
- Which of the following lies to the north of India?
 

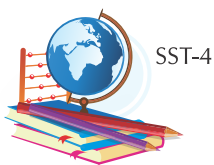
(a) Himalayas	<input type="radio"/>	(b) Arabian Sea	<input type="radio"/>
(c) Indian Ocean	<input type="radio"/>	(d) Bay of Bengal	<input type="radio"/>
- How many States are there in India?
 

(a) 25	<input type="radio"/>	(b) 29	<input type="radio"/>
(c) 30	<input type="radio"/>	(d) 38	<input type="radio"/>
- How many Union Territories are there in India?
 

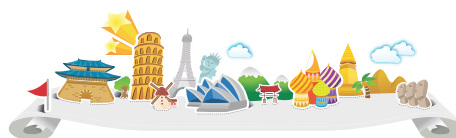
(a) 7	<input type="radio"/>	(b) 9	<input type="radio"/>
(c) 11	<input type="radio"/>	(d) 13	<input type="radio"/>

#### B. Write True or False :

- India is also known as Bharat. ....
- India is the most populated country in the world. ....
- The southern part of India is like a crown. ....
- India has only 2.42 percent of the earth's surface. ....
- India lies in the continent of Asia. ....



SST-4



### C. Answer the following questions :

1. Which part of India looks like a crown?
2. Which countries are India's neighbours?
3. What are the main physical divisions of India?
4. Why has India been divided into States and Union Territories?
5. What is the difference between a State and a Union Territories?

## ACTIVITIES AND PROJECTS

### TASKS FOR FA

1. On an outline map of Asia, mark the following countries.  
Nepal      Bhutan      Bangladesh      Pakistan      ChinaSri Lanka
2. On an outline map of India, mark its various physical regions.
3. During your holidays, you travelled by train from Jammu to Chennai. Write a letter to your friend describing different landforms you saw, languages you heard, dresses you saw and the food you ate.

## SPEAKING SKILLS

'MERA BHARAT MAHAN' – speak for a few minutes on this topic. Make sure your points are genuine.



## LIFE SKILLS

Make a model of India using clay. Use more clay to make the different physical features of India (the mountains, the plains, the plateaus, the deserts and the coastal areas). Put the model in the open sun for half an hour. Once the clay has dried, decorate it with sand, soil and grass. You can stick them to the model using glue.

## H.O.T.S.

(High Order Thinking Skills)

Which State has been divided into two state in 2014? Also name the capital of these States.

